

**SAIACO****ORIENTAL ELECTRONIC INDUSTRIAL CO., LTD.****ksize.ru****丸東實業有限公司**


TEL: 886-2-26536617 9 FAX: 886-2-26533827

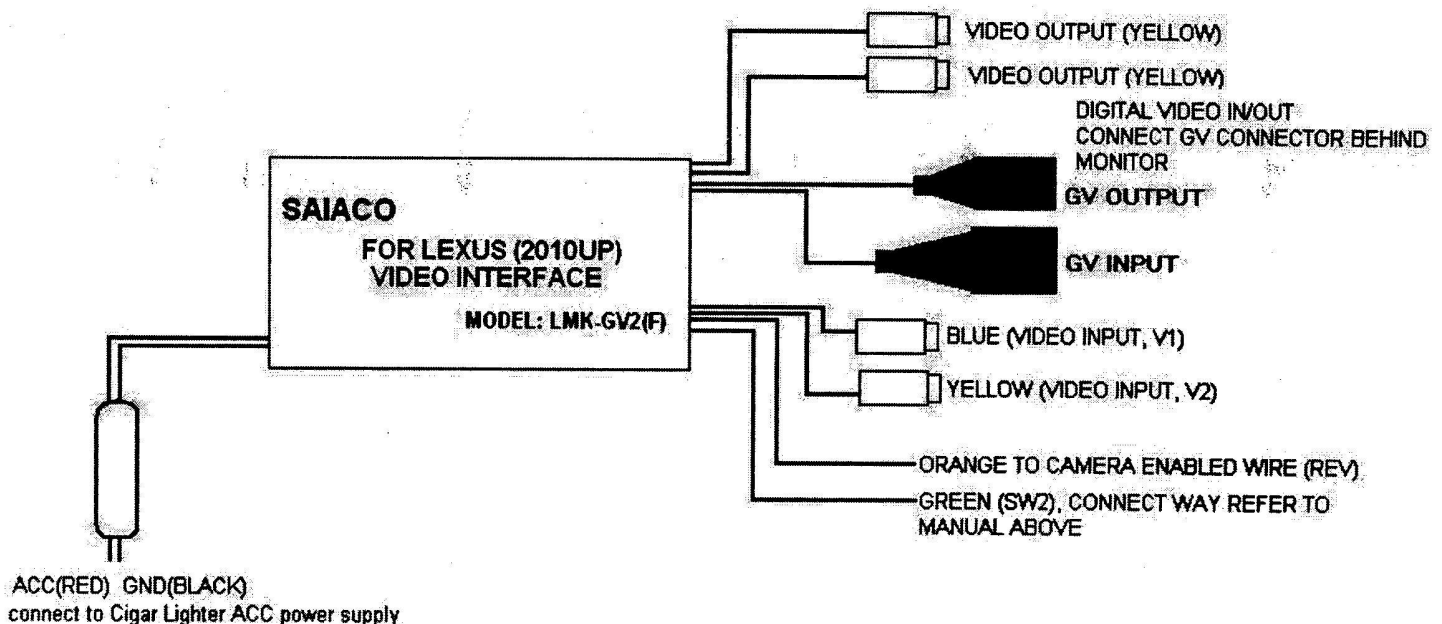
Автозвук и аксессуары E-mail: saiaco@ms32.hinet.net / sales01@saiaco.com.tw

<http://www.saiaco.com.tw>**Lexus (2010-2012, 2013) VIDEO INTERFACE****LMK-GV2(F) MANUAL****I. FEATURE**

- 1, Compatible cars: 2010-2012 RX-350/450H/CT200H, 2013UP GS250/350/450H/RX270
- 2, Retain the wires of SPD, PKB, can watch video in motion
- 3, Two video input
- 4, When starting reverse gear shift, will automatically change to camera picture to monitor

**II, INSTALLATION AND USER GUIDE**

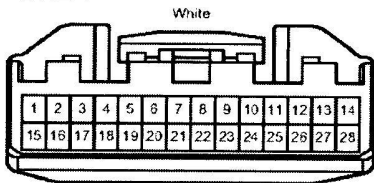
- 1, V1 (blue) is specific purpose for extension video input
- 2, Herebelow DVD output way (except front 6CD head unit, due the head unit does not support the function)
  - (1) 2010-2012 RX350/450H/CT-200H: extend V2(yellow) connect to video output port of DVD Changer (see picture one #7/#8) then available to video in motion
  - (2) 2013 GS250/350/450H/RX270: need to disassemble head unit to connect wire (see picture five)
- 3, Green wire (SW2) connection
  - (1) 2010-2012 RX350/450H/CT200H: interface green wire connect to light green wire #5 (see picture three)
  - (2) 2013UP GS250/350/450H/RX270: interface green wire connect to #31 (see picture four)
- 4, Orange wire (REV) connect to camera enabled wire (reversing light start wire).
- 5, Connect ACC(red), GND(black), suggest connect to Cigar Lighter ACC power supply
- 6, Remove monitor, find the GV IN/OUT plug behind monitor and connect interface GV OUTPUT, GV INPUT to GV IN/OUT
- 7, Long press hang-up button  two seconds, select V1 / V2 / initial system in cycle
- 8, Audio input: head unit select AUX function, audio obtain from AUX 3.5mm plug in car



### III, CORRESPONDING PLUG DIAGRAM

#### (1) 2010-2012 RX-350 / 450H / CT200H

PICTURE 1

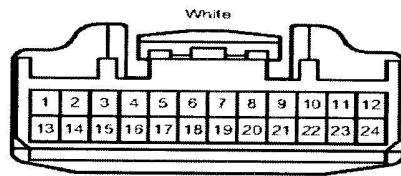


WHITE SOCKET BEHIND HEAD UNIT

※ FIND OUT B+ & GND FIRST

#14 : B +      #08: DVD V+  
#15 : GND      #07: DVD V—

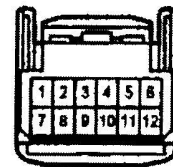
PICTURE 2



WHITE SOCKET BEHIND MONITOR

#12 : B+  
#24 : ACC  
#13 : GND

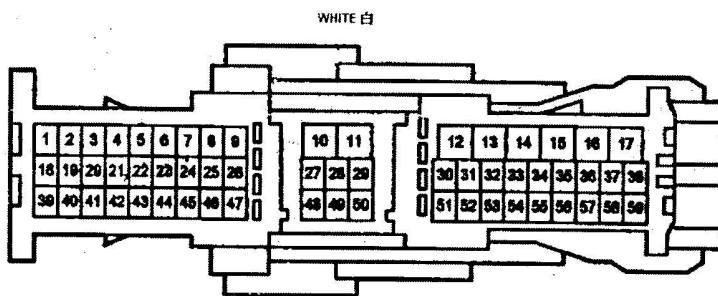
PICTURE 3



BLACK AUDIO CONTROLLED  
SOCKET OF STEERING WHEEL  
#5 (SW2): LIGHT GREEN TO  
INTERFACE GREEN WIRE

#### (2) 2013UP GS250 / 350 / 450H / RX270

PICTURE 4

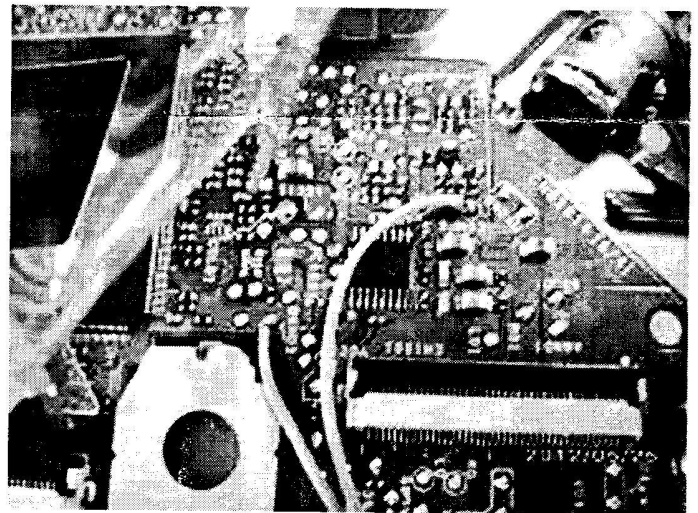


WHITE SOCKET BEHIND HEAD UNIT

※ FIND OUT B+ & GND FIRST

#31: SW2 TO INTERFACE GREEN WIRE  
#30: SW1  
#12: GND  
#16: ACC  
#17: B+

PICTURE 5



FOR DVD OUTPUT, DISASSEMBLE HEAD UNIT  
CONNECT WIRE POSITION

**ksize.ru**  
Автовзвук и аксессуары